

VVS Investments LLC, DBA Summus Grow  
1039 E Carefree Hwy  
Phoenix, AZ 85085  
16027414145  
Lic#: 00000131DCYO00924714

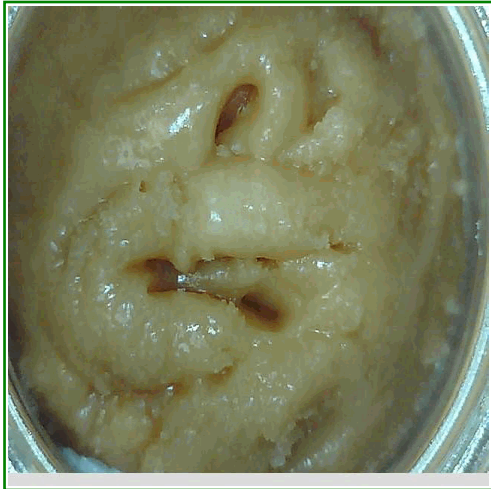
Sample: S407042-05  
CC ID#: 2407C4L0038.1963  
Lot#: N/A  
Batch#: DP071024HR  
Batch Size: N/A  
Manufacture Date: 07/10/2024  
Harvest Date: 05/24/2024

**FINAL**

Sample Name: DP071024HR - Double Papaya - Rosin  
Strain Name: Double Papaya  
Matrix: Concentrates\_Extracts  
Amount Received: 62.6167 g

Sample Collected: 07/10/2024 13:09  
Sample Received: 07/12/2024 12:42  
Report Created: 07/19/2024 18:23

**SAFETY**



<b>Microbials</b>  <b>PASS</b>	<b>Residual Solvents</b>  <b>PASS</b>	<b>Mycotoxins</b>  <b>PASS</b>	<b>Pesticides</b>  <b>PASS</b>
<b>Metals</b>  <b>PASS</b>			

**Terpenes**

**5.66%**  
**Total Terpenes (Q3)**

**Cannabinoid Results**

<b>84.2%</b> <b>Sum of Cannabinoids (Q3)</b>	<b>74.6%</b> <b>Total THC</b>	<b>&lt;LOQ</b> <b>Total CBD</b>	<b>RATIO</b> <b>1 : 0</b> <b>THC : CBD</b>
---	----------------------------------	------------------------------------	--

Total THC= THCA \* 0.877 + d9-THC  
Total CBD= CBDA \* 0.877 + CBD

VVS Investments LLC, DBA Summus Grow

1039 E Carefree Hwy  
Phoenix, AZ 85085  
16027414145  
Lic#: 00000131DCYO00924714

Sample: S407042-05

CC ID#: 2407C4L0038.1963  
Lot#: N/A  
Batch#: DP071024HR  
Batch Size: N/A  
Manufacture Date: 07/10/2024  
Harvest Date: 05/24/2024

**FINAL**

Sample Name: DP071024HR - Double Papaya - Rosin

Strain Name: Double Papaya

Matrix: Concentrates\_Extracts

Amount Received: 62.6167 g

Sample Collected: 07/10/2024 13:09

Sample Received: 07/12/2024 12:42

Report Created: 07/19/2024 18:23

**Cannabinoids by HPLC-DAD - Compliance**

Date Analyzed: 07/15/2024 Analyst Initials: DRF SOP: C4-SOP-CHEM-003

Analyte	LOQ	Result	Result	Qualifier
	%	%	mg/g	
THCA	1.61	77.9	779	
d9-THC	1.61	6.25	62.5	
d8-THC	1.61	<LOQ	< LOQ	
CBDA	1.61	<LOQ	< LOQ	
CBD	1.61	<LOQ	< LOQ	
CBG	1.61	<LOQ	< LOQ	
CBN	1.61	<LOQ	< LOQ	
CBC	1.61	<LOQ	< LOQ	
Sum of Cannabinoids	1.61	84.2	842	Q3
Total THC	1.61	74.6	746	
Total CBD	1.61	<LOQ	< LOQ	
Total Cannabinoids	1.61	74.6	746	Q3

Total THC= THCA \* 0.877 + d9-THC. Total CBD= CBDA \* 0.877 + CBD.

VVS Investments LLC, DBA Summus Grow

1039 E Carefree Hwy  
Phoenix, AZ 85085  
16027414145  
Lic#: 00000131DCYO00924714

Sample: S407042-05

CC ID#: 2407C4L0038.1963  
Lot#: N/A  
Batch#: DP071024HR  
Batch Size: N/A  
Manufacture Date: 07/10/2024  
Harvest Date: 05/24/2024

**FINAL**

Sample Name: DP071024HR - Double Papaya - Rosin

Strain Name: Double Papaya  
Matrix: Concentrates\_Extracts  
Amount Received: 62.6167 g

Sample Collected: 07/10/2024 13:09  
Sample Received: 07/12/2024 12:42  
Report Created: 07/19/2024 18:23

**Terpenes by GC-FID- Noncompliance**

Date Analyzed: 07/16/2024 Analyst Initials: DRF SOP: C4-SOP-CHEM-012

Analyte	LOQ	Result	Result	Qualifier
	%	%	mg/g	
d-Limonene	0.019	1.77	17.7	Q3
beta-Myrcene	0.019	1.40	14.0	Q3
Linalool	0.019	0.666	6.66	Q3
beta-Caryophyllene	0.019	0.470	4.70	Q3
beta-Pinene	0.019	0.211	2.11	Q3
alpha-Pinene	0.019	0.191	1.91	Q3
alpha-Bisabolol	0.019	0.177	1.77	Q3
Guaiol	0.019	0.155	1.55	Q3
alpha-Humulene	0.019	0.152	1.52	Q3
Fenchol	0.019	0.141	1.41	Q3
Terpineol	0.019	0.113	1.13	Q3
trans-B-Farnesene	0.019	0.086	0.855	Q3
Camphene	0.026	0.052	0.522	Q3
Borneol	0.029	0.032	0.322	Q3
Terpinolene	0.019	0.025	0.255	Q3
Nerolidol	0.019	0.023	0.228	Q3
Cedrene	0.019	<LOQ	< LOQ	Q3
Cedrol	0.019	<LOQ	< LOQ	Q3
Geranyl Acetate	0.019	<LOQ	< LOQ	Q3
Pulegone	0.019	<LOQ	< LOQ	Q3
Nerol	0.044	<LOQ	< LOQ	Q3
Citronellol	0.044	<LOQ	< LOQ	Q3
Fenchone	0.019	<LOQ	< LOQ	Q3
Sabinene Hydrate	0.019	<LOQ	< LOQ	Q3
alpha-Phelladrene	0.019	<LOQ	< LOQ	Q3
Sabinene	0.019	<LOQ	< LOQ	Q3
p-Cymene	0.019	<LOQ	< LOQ	Q3
gamma-Terpinene	0.019	<LOQ	< LOQ	Q3
Caryophyllene Oxide	0.019	<LOQ	< LOQ	Q3
Eucalyptol	0.019	<LOQ	< LOQ	Q3
Geraniol	0.056	<LOQ	< LOQ	Q3
Isopulegol	0.019	<LOQ	< LOQ	Q3
beta-Ocimene	0.019	<LOQ	< LOQ	Q3
alpha-Terpinene	0.019	<LOQ	< LOQ	Q3
delta-3-Carene	0.019	<LOQ	< LOQ	Q3
<b>Total Terpenes</b>		<b>5.664</b>	<b>56.64</b>	

VVS Investments LLC, DBA Summus Grow  
1039 E Carefree Hwy  
Phoenix, AZ 85085  
16027414145  
Lic#: 00000131DCYO00924714

Sample: S407042-05  
CC ID#: 2407C4L0038.1963  
Lot#: N/A  
Batch#: DP071024HR  
Batch Size: N/A  
Manufacture Date: 07/10/2024  
Harvest Date: 05/24/2024

**FINAL**

Sample Name: DP071024HR - Double Papaya - Rosin  
Strain Name: Double Papaya  
Matrix: Concentrates\_Extracts  
Amount Received: 62.6167 g

Sample Collected: 07/10/2024 13:09  
Sample Received: 07/12/2024 12:42  
Report Created: 07/19/2024 18:23

**Pesticides by LC/MS/MS - Compliance**

**Pass**

Date Analyzed: 07/16/2024 Analyst Initials: JCB SOP: C4-SOP-CHEM-006

Analyte	LOQ	Limit	Result	Qualifier	Status	Analyte	LOQ	Limit	Result	Qualifier	Status
	ppm	ppm	ppm				ppm	ppm	ppm		
Abamectin	0.120	0.5	<LOQ	I1	Pass	Imazalil	0.100	0.2	<LOQ	R1	Pass
Acephate	0.100	0.4	<LOQ		Pass	Imidacloprid	0.100	0.4	<LOQ		Pass
Acetamiprid	0.050	0.2	<LOQ		Pass	Kresoxim-methyl	0.100	0.4	<LOQ		Pass
Aldicarb	0.100	0.4	<LOQ		Pass	Malathion	0.050	0.2	<LOQ		Pass
Azoxystrobin	0.050	0.2	<LOQ		Pass	Metalaxyl	0.100	0.2	<LOQ		Pass
Bifenazate	0.050	0.2	<LOQ	L1	Pass	Methiocarb	0.050	0.2	<LOQ		Pass
Bifenthrin	0.050	0.2	<LOQ		Pass	Methomyl	0.100	0.4	<LOQ	V1	Pass
Boscalid	0.100	0.4	<LOQ	I1	Pass	Myclobutanil	0.050	0.2	<LOQ		Pass
Carbaryl	0.050	0.2	<LOQ		Pass	Naled	0.125	0.5	<LOQ		Pass
Carbofuran	0.050	0.2	<LOQ		Pass	Oxamyl	0.250	1.0	<LOQ		Pass
Chlorantraniliprole	0.050	0.2	<LOQ		Pass	Paclobutrazol	0.100	0.4	<LOQ		Pass
Chlorfenapyr	0.501	1.0	<LOQ	V1	Pass	Permethrins	0.050	0.2	<LOQ		Pass
Chlorpyrifos	0.050	0.2	<LOQ		Pass	Phosmet	0.050	0.2	<LOQ		Pass
Clofentezine	0.050	0.2	<LOQ		Pass	Piperonyl butoxide	0.501	2.0	<LOQ		Pass
Cyfluthrin	0.501	1.0	<LOQ		Pass	Prallethrin	0.100	0.2	<LOQ		Pass
Cypermethrin	0.250	1.0	<LOQ		Pass	Propiconazole	0.100	0.4	<LOQ		Pass
Daminozide	0.501	1.0	<LOQ		Pass	Propoxur	0.050	0.2	<LOQ		Pass
Diazinon	0.050	0.2	<LOQ		Pass	Pyrethrins	0.149	1.0	<LOQ		Pass
Dichlorvos	0.050	0.1	<LOQ	I1	Pass	Pyridaben	0.050	0.2	<LOQ		Pass
Dimethoate	0.050	0.2	<LOQ		Pass	Spinosad	0.050	0.2	<LOQ		Pass
Ethoprophos	0.050	0.2	<LOQ		Pass	Spiromesifen	0.050	0.2	<LOQ		Pass
Etofenprox	0.100	0.4	<LOQ		Pass	Spirotetramat	0.050	0.2	<LOQ		Pass
Etoxazole	0.050	0.2	<LOQ		Pass	Spiroxamine	0.100	0.4	<LOQ		Pass
Fenoxycarb	0.050	0.2	<LOQ		Pass	Tebuconazole	0.100	0.4	<LOQ		Pass
Fenpyroximate	0.100	0.4	<LOQ		Pass	Thiacloprid	0.050	0.2	<LOQ		Pass
Fipronil	0.100	0.4	<LOQ	L1, V1	Pass	Thiamethoxam	0.050	0.2	<LOQ		Pass
Fonicamid	0.250	1.0	<LOQ		Pass	Trifloxystrobin	0.050	0.2	<LOQ		Pass
Fludioxonil	0.100	0.4	<LOQ		Pass						
Hexythiazox	0.250	1.0	<LOQ		Pass						

VVS Investments LLC, DBA Summus Grow  
1039 E Carefree Hwy  
Phoenix, AZ 85085  
16027414145  
Lic#: 00000131DCYO00924714

**FINAL**

Sample: S407042-05  
CC ID#: 2407C4L0038.1963  
Lot#: N/A  
Batch#: DP071024HR  
Batch Size: N/A  
Manufacture Date: 07/10/2024  
Harvest Date: 05/24/2024

Sample Name: DP071024HR - Double Papaya - Rosin  
Strain Name: Double Papaya  
Matrix: Concentrates\_Extracts  
Amount Received: 62.6167 g

Sample Collected: 07/10/2024 13:09  
Sample Received: 07/12/2024 12:42  
Report Created: 07/19/2024 18:23

**Metals by ICP-MS - Compliance**

**Pass**

Date Analyzed: 07/18/2024 Analyst Initials: JEK SOP: C4-SOP-CHEM-008

Analyte	LOQ	Limit	Result	Qualifier	Status
	ppm	ppm	ppm		
Arsenic	0.098	0.4	<LOQ		Pass
Cadmium	0.098	0.4	<LOQ		Pass
Lead	0.393	1.0	<LOQ		Pass
Mercury	0.039	0.2	<LOQ		Pass

**Mycotoxins by ELISA- Compliance**

**Pass**

Date Analyzed: 07/16/2024 Analyst Initials: DHV SOP: C4-SOP-MICRO-014

Analyte	LOQ	Limit	Result	Qualifier	Status
	ppb	ppb	ppb		
Aflatoxins Total	2.00	20	4.88		Pass
Ochratoxin A	4.00	20	5.10		Pass

Total Aflatoxins includes Aflatoxins B1, B2, G1, and G2.

VVS Investments LLC, DBA Summus Grow  
1039 E Carefree Hwy  
Phoenix, AZ 85085  
16027414145  
Lic#: 00000131DCYO00924714

**FINAL**

Sample: S407042-05  
CC ID#: 2407C4L0038.1963  
Lot#: N/A  
Batch#: DP071024HR  
Batch Size: N/A  
Manufacture Date: 07/10/2024  
Harvest Date: 05/24/2024

Sample Name: DP071024HR - Double Papaya - Rosin  
Strain Name: Double Papaya  
Matrix: Concentrates\_Extracts  
Amount Received: 62.6167 g

Sample Collected: 07/10/2024 13:09  
Sample Received: 07/12/2024 12:42  
Report Created: 07/19/2024 18:23

**Microbials**

**Pass**

**E. coli by 3M Petrifilm- Compliance**

Date Analyzed: 07/16/2024 Analyst Initials: DHV SOP: C4-SOP-MICRO-010

Analyte	LOQ	Limit	Result	Qualifier	Status
	CFU/g	CFU/g	CFU/g		
<i>E. coli</i>	10	100	<10		Pass

**Aspergillus and Salmonella by qPCR - Compliance**

Date Analyzed: 07/16/2024 Analyst Initials: DHV SOP: C4-SOP-MICRO-013

Analyte	Result	Qualifier	Status
	in one gram		
<i>Salmonella spp.</i>	Not Detected		Pass
<i>Aspergillus flavus,</i> <i>Aspergillus fumigatus,</i> <i>Aspergillus niger, or</i> <i>Aspergillus terreus</i>	Not Detected		Pass

Salmonella and Aspergillus by Medicinal Genomics.

VVS Investments LLC, DBA Summus Grow  
1039 E Carefree Hwy  
Phoenix, AZ 85085  
16027414145  
Lic#: 00000131DCYO00924714

Sample: S407042-05  
CC ID#: 2407C4L0038.1963  
Lot#: N/A  
Batch#: DP071024HR  
Batch Size: N/A  
Manufacture Date: 07/10/2024  
Harvest Date: 05/24/2024

**FINAL**

Sample Name: DP071024HR - Double Papaya - Rosin  
Strain Name: Double Papaya  
Matrix: Concentrates\_Extracts  
Amount Received: 62.6167 g

Sample Collected: 07/10/2024 13:09  
Sample Received: 07/12/2024 12:42  
Report Created: 07/19/2024 18:23

**Residual Solvents by Headspace GC/MS - Compliance**

**Pass**

Date Analyzed: 07/19/2024 Analyst Initials: JCB SOP: C4-SOP-CHEM-005

Analyte	LOD	LOQ	Limit	Result	Qualifier	Status	Analyte	LOD	LOQ	Limit	Result	Qualifier	Status
	ppm	ppm		ppm				ppm	ppm				
Acetone		120.2	1000	<LOQ		Pass	2,2-Dimethylbutane		38.46		<LOQ		
Acetonitrile		48.08	410	<LOQ		Pass	2-methylpentane/ 2,3-dimethylbutane		76.92		<LOQ		
Benzene		0.962	2	<LOQ		Pass	2-Propanol (IPA)		601.0	5000	<LOQ		Pass
Butanes		601.0	5000	<LOQ		Pass	Isopropyl acetate		601.0	5000	<LOQ		Pass
<i>n</i> -Butane		601.0		<LOQ			Methanol		360.6	3000	<LOQ		Pass
<i>iso</i> -Butane		601.0		<LOQ			Pentanes		601.0	5000	<LOQ		Pass
Chloroform		14.42	60	<LOQ		Pass	<i>n</i> -Pentane		601.0		<LOQ		V1
Dichloromethane		72.12	600	<LOQ		Pass	<i>iso</i> -pentane		601.0		<LOQ		V1
Ethanol		601.0	5000	<LOQ		Pass	<i>neo</i> -Pentane		601.0		<LOQ		
Ethyl acetate		601.0	5000	<LOQ		Pass	Toluene		110.6	890	<LOQ		Pass
Diethyl Ether		601.0	5000	<LOQ		Pass	Xylenes		264.4	2170	<LOQ		Pass
n-Heptane		601.0	5000	<LOQ		Pass	<i>m/p</i> -Xylene		528.8		<LOQ		
Hexanes		38.46	290	<LOQ		Pass	<i>o</i> -Xylene		264.4		<LOQ		
<i>n</i> -Hexane		38.46		<LOQ			Ethyl benzene		264.4		<LOQ		
3-Methylpentane		38.46		<LOQ									

VVS Investments LLC, DBA Summus Grow  
1039 E Carefree Hwy  
Phoenix, AZ 85085  
16027414145  
Lic#: 00000131DCYO00924714

**FINAL**

Sample: S407042-05  
CC ID#: 2407C4L0038.1963  
Lot#: N/A  
Batch#: DP071024HR  
Batch Size: N/A  
Manufacture Date: 07/10/2024  
Harvest Date: 05/24/2024

Sample Name: DP071024HR - Double Papaya - Rosin  
Strain Name: Double Papaya  
Matrix: Concentrates\_Extracts  
Amount Received: 62.6167 g

Sample Collected: 07/10/2024 13:09  
Sample Received: 07/12/2024 12:42  
Report Created: 07/19/2024 18:23

**Notes and Definitions**

Item	Definition
I1	Interference. Relative intensity of a characteristic ion in the sample analyte exceeded 30% of the relative intensity in the reference spectrum.
L1	The percent recovery of the LCS was above the control limit for the test but analyte was not detected above the Action Limit in Table 3.1.
Q3	Testing result is for informational purposes only and cannot be used to satisfy dispensary testing requirements in R9-17-317.01(A) or labeling requirements in R9-17-317. Testing result is not accredited under ISO 17025.
R1	The RPD for the LCS/LCSD pair exceeded 20% but recoveries were within control limits.
V1	The recovery from initial or continuing calibration verification standards is greater than the acceptance limits, but the sample's target analytes were not detected above the maximum allowable concentrations in Table 3.1 for the analytes in the sample.
< LOQ	Results below the Limit of Quantification.
ND	Not Detected
Limit	Maximum allowable concentration as defined by Table 3.1 in Arizona Administrative code (A.A.C.) Title 9, Chapter 17
CFU/g	Colony forming units per gram
ppm	Parts per million
ppb	Parts per billion
NT	Not Tested
Sum of Cannabinoids = THCA + d9-THC + CBDA + CBD + d8-THC + CBG + CBN + CBC	
Total Cannabinoids = Total THC + Total CBD + d8-THC + CBG + CBN + CBC	

**CASE NARRATIVE**

**ARIZONA DEPARTMENT OF HEALTH SERVICES' WARNING:**  
Marijuana use can be addictive and can impair an individual's ability to drive a motor vehicle or operate heavy machinery. Marijuana smoke contains carcinogens and can lead to an increased risk for cancer, tachycardia, hypertension, heart attack, and lung infection. Marijuana use may affect the health of a pregnant woman and the unborn child. KEEP OUT OF REACH OF CHILDREN. Using Marijuana during pregnancy could cause birth defects or other health issues to your unborn child.